

# My Bee Hive

---

**Grade Level:** K-2

**Objective:** After completing this exercise, students will have practiced reading and following directions.

**Illinois Learning Standards:** 1.B.1d; 2.B.1a; 4.B.1b

**Assessment Framework:** 1.3.12



**Suggested Reading Materials:**

The Beeman by Laurie Krebs and Valeria Cis

ISBN 978-1-84686-146-8

The Life and Times of the Honeybee by Charles Micucci

ISBN-13: 978-0-395-86139-4

Hooray for Beekeeping! By Bobbie Kalman

ISBN 0-86505-668-4

Honey by Louise Spilsbury (in the Heinemann First Library Food Series)

ISBN 158810146-0

Illinois AITC Specialty Crops Ag Mag

**What You Will Need:**

Scissors

Markers or Crayons

Glue

**Activity Instructions:**

1. Have the students cut out their beehive and fold it in half. Have them write their name on the front in the blank.
2. The students will read and follow the glyph instructions. For younger students, teachers will have to help them read and understand the directions.
3. When all books are complete, hang them up in the room and discuss with the class the differences in the hives. Who likes honey? How many students like summer best?

**Lesson Extender:**

1. Turn this into a math activity. After completing the bee books, talk about the differences in each student's book. When asking each question, have the students keep a tally of who likes honey and who doesn't, how many students like each season, etc. Then have them make a graph on paper (line graph, pie graph, bar graph, etc).
2. Have the students get up and stand in lines for each question. This would be a bar graph. If you hand a rope to the last student in the first line, have them feed the rope to the last student in each line. Now the bar graph, becomes a line graph.

# Glyph Instructions

Read and follow directions for each question.

1. Honey bees prepare honey from nectar which they collect from flowers and blossoms of trees. Do you like honey?

| <b>Yes, I do like honey</b>                | <b>No, I don't like honey</b>           |
|--|---|
| Color the outside of your bee book purple. | Color the outside of your bee book red. |

2. Bees feed on nectar, which is very sweet and high in sugar. How often do you drink something sweet?

| <b>0 sweet drinks per day</b>                 | <b>1 sweet drink per day</b>                      | <b>2 or more sweet drinks per day</b>                |
|---|---|--|
| Don't color or glue any flowers in your book. | Color 1 flower pink and glue it inside your book. | Color 2 flowers pink and glue them inside your book. |

3. Bees are used to pollinate many fruit and vegetable crops in Illinois. Do you like to eat vegetables or fruits?

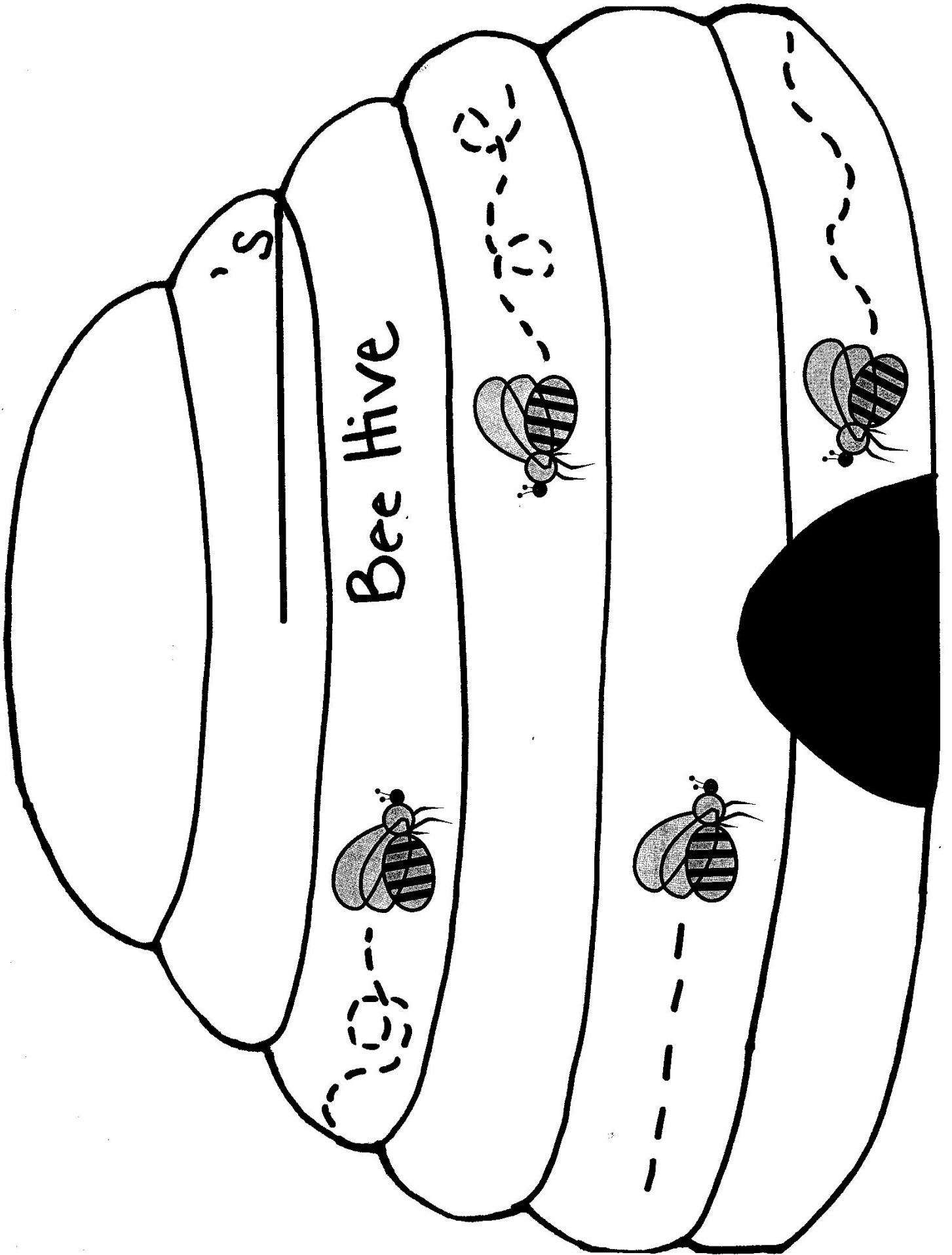
| <b>I like to eat fruits</b>                       | <b>I like to eat vegetables</b>                       | <b>I like to eat fruits and vegetables</b>                                | <b>I do not like fruits or vegetables</b>                   |
|---|---|---|---|
| Color the apple red and glue it inside your book. | Color the carrot orange and glue it inside your book. | Color the apple red and the carrot orange and glue both inside your book. | Do not color or glue any fruits or vegetables in your book. |

4. Bees use their wings to fly. Have you ever flown in a plane?

| <b>Yes, I have flown in a plane</b>               | <b>No, I have not flown in a plane</b>             |
|---|--|
| Color the bee blue, and glue it inside your book. | Color the bee green, and glue it inside your book. |

5. Bees in Illinois are most active in the summer months. What season do you like best?

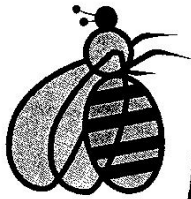
| <b>Winter</b>                                    | <b>Spring</b>                                      | <b>Summer</b>                                      | <b>Fall</b>                                     |
|--|--|--|---|
| Color the sun blue and glue it inside your book. | Color the sun yellow and glue it inside your book. | Color the sun orange and glue it inside your book. | Color the sun red and glue it inside your book. |



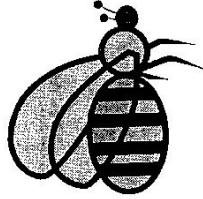
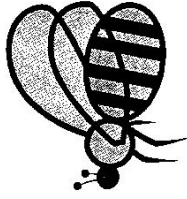
s

Bee Hive

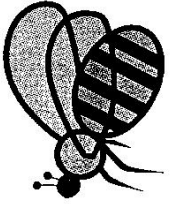
s



s



s



s

# Bee Book

## Glyph Cutouts

