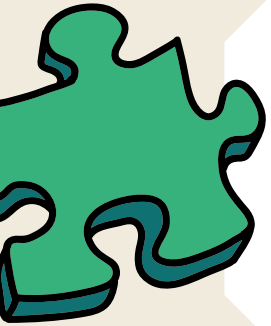




BUILD A CATTLE FENCE

PROBLEM:

Beef cattle need some room to move around and graze.



CHALLENGE:

Design a sturdy fence to keep cattle in a grassy area.



Suggested Materials

- Popsicle sticks
- Rubber bands
- Pencils
- Tape or glue
- Paper
- Wire
- Yarn or string

QUESTIONS TO CONSIDER:

- What materials will withstand different types of weather the best?
- Can you calculate the perimeter of fencing you need?
- What if the grassy area is not all flat land?
- How will the farmers and the cattle get in and out of this fenced area?



BEHIND THE SCENES:

There are many ways to raise beef cattle. Farmers use fencing to keep their animals contained and safe from predators and other dangers. In order to keep these large animals in, fences need to be strong, long-lasting, and reliable.



Fun Fact

11 basketballs, 144 baseballs, or 20 footballs can be made from one cowhide!