

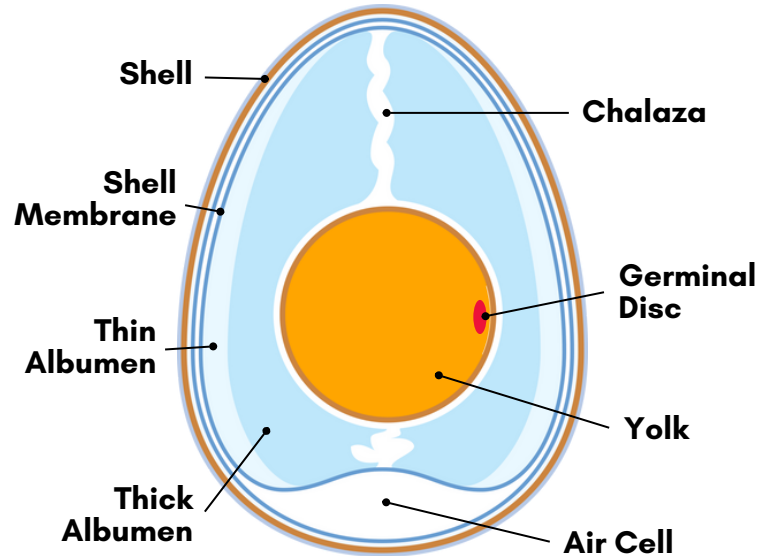
INCUBATION TIPS & TRICKS

Total Days to Hatch: 21

GENERAL TIPS AND TRICKS

- If using an automatic egg turner or an incubator that holds eggs vertically, always place them in large end up. There is an air cell in this end that needs to stay at the top.
- You are welcome to candle the eggs using a flashlight or an egg candler. This works best when all the lights in the room are off!
- When you open the incubator, always do so as quickly as possible so as not to let out heat and humidity.

EGG ANATOMY



INCUBATOR REQUIREMENTS

	Temperature	Humidity
Days 1 - 17	99.5° F <small>(temporary fluctuation between 99° - 101° will be okay, just try to stay as close to 99.5° as you can)</small>	45% - 55%
Days 18 - 21		65% - 70% <small>(increased humidity in the last 3 days softens the shell and allows the chicks to hatch easier)</small>

EGG TURNING - MANUAL

- Eggs must be turned 3x a day to ensure even incubation throughout the egg.
- **Do not turn the eggs after day 18.** This way the chicks won't be disturbed while they're trying to hatch!

EGG TURNING - AUTOMATIC

- Some incubators have an automatic egg turning tray, which will slowly rotate the eggs for you throughout incubation.
- **Take out the turner on day 18** & lay eggs horizontally in the incubator for hatching.

PREPARING FOR HATCH

- On day 18, stop turning the eggs, turn up the humidity and do not open the incubator again until ALL chicks are hatched. The eggs are "on lockdown" during these last few days.
- Wait for ALL chicks to hatch & dry off before removing any... they don't need food or water for up to 48 hours because they have absorbed their yolk just before hatching. If any eggs have not started to "pip" (initial break through the shell) by day 23, they are not likely to hatch.