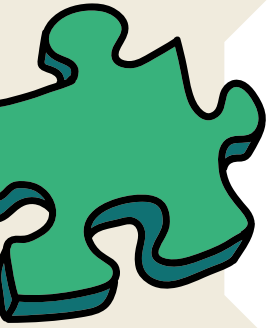




## DESIGN A BETTER EGG CARTON

### PROBLEM:

Eggs are fragile and can easily crack in cartons during transport to store shelves and to our homes.



### CHALLENGE:

Design an egg carton that minimizes chances of eggs cracking.

### QUESTIONS TO CONSIDER:

- Does the shape of the egg affect the position when in the carton?
- Will your carton work for different sized eggs?
- Is it easy to add and remove eggs from the carton?



### BEHIND THE SCENES:

Egg shells are made up of calcium carbonate which protects the components inside the egg while the chick is developing. While it offers protection, it is also fragile enough to allow chicks to break through when they are hatching. Don't worry, the eggs we buy in the store are not fertilized.

