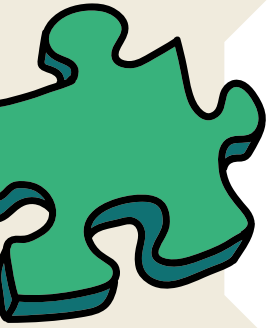




DESIGN A BOAT SYSTEM

PROBLEM:

Flatboats that use rivers to import and export products can get stuck in shallow waters.



CHALLENGE:

Design a boat or system that can help boats get through shallow waters without getting stuck.

QUESTIONS TO CONSIDER:

- Will the river always be shallow in the same places?
- Are all boats the same shape and length?
- Will the products on the boat be prevented from spilling?



BEHIND THE SCENES:

In Lincoln's time, river transportation was extremely important to the economy. But the rivers in IL were wide and shallow, and boats were quick to get stuck on sandbars. This made river journeys extremely dangerous. Thanks to changes in technologies, the rivers in IL today can be more easily and safely navigated by enormous barges of goods with the help of our vitally important lock and dam systems throughout the state.

