



NAME: \_\_\_\_\_



# ILLINOIS SPECIALTY CROPS

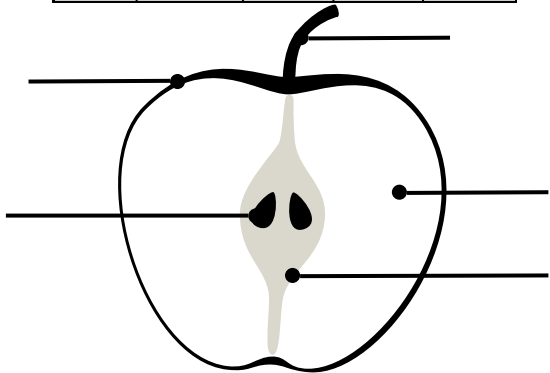
## APPLES

Apples are a member of the rose family. In Illinois, apples are in season from June to November. You can find 2,500 varieties of apples in the United States. 100 varieties are sold in grocery stores. Once ripe, the apples are hand picked from the tree.

### DO YOU KNOW THE PARTS OF AN APPLE?

Label the parts of the apple.

flesh	stem	seed	core	skin
-------	------	------	------	------



## COMMODITY COLORING

On the front cover, use ag-accurate colors to color the fruits and vegetables

1. bell pepper's grow in gardens
2. red and green peppers are most popular

### SENTENCE FIX

Use correct capitalization and punctuation to fix each sentence.

1. bell pepper's grow in gardens

2. red and green peppers are most popular

### BELL PEPPERS

Bell peppers are a garden vegetable. A bell pepper plant has dark green leaves, small white flowers, and edible fruits. The fruit is classified as a berry and comes in various colors like green, yellow, orange, red, purple, black, and white.

### SENTENCE FIX

Use correct capitalization and punctuation to fix each sentence.

1. bell pepper's grow in gardens

2. red and green peppers are most popular

## PUMPKINS

Pumpkins are a member of the gourd family. These plants are native to Central America and Mexico. Pumpkins are grown mainly for processing with a small percentage grown for ornamental sales through you-pick farms and farmers markets.

### PUMPKIN ADDITION

Each pumpkin part has a value. Work out the total vertically and horizontally.

= 23   = 12   = 7   = 47

	+		+		+		=	_____
+	+	+	+	+	+	+		
	+		+		+		=	_____

= 35 = \_\_\_\_\_ = \_\_\_\_\_ = \_\_\_\_\_


### STRAWBERRY GRAPHING

Color in the graph based on how many of each strawberry and flower you count.

example: if you count five strawberries, color five boxes in that row.

Strawberries are the only fruit that have their seeds on the outside. They are part of the rose family. In the United States, we have over 58,000 acres of land dedicated to growing strawberries. Strawberries grow on vines.

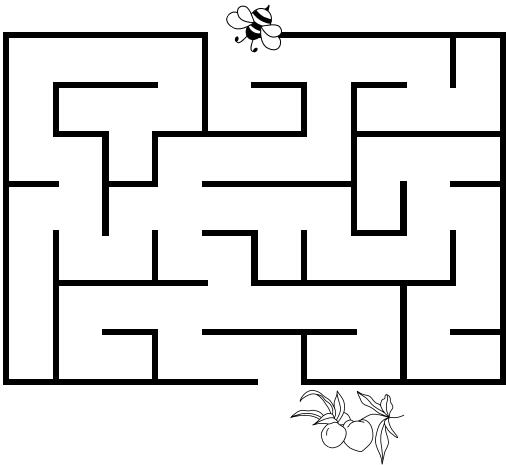
### STRAWBERRIES

## PEACHES

Peaches are a fruit that grows on trees. In 2022, the United States produced over 625,000 tons of peaches. Peaches grow in orchards where the climate is just right. Peach trees like hot summers and winter temperatures colder than 45°F.

### POLLINATION MAZE

Pollination is key for the development of peaches... help the bee get to the tree branch!



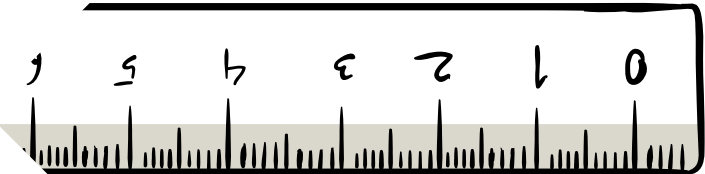
## GREEN BEANS

Green beans are the second-most common garden vegetable. Green beans are sometimes referred to as string beans or snap beans. Green beans are easy to grow after the last frost in spring. After about 55 days, the plants will produce their first pods. There are two different types of green bean plants: pole beans and bush beans. The beans are hand picked for harvest.

### READING COMPREHENSION

Circle the correct answer based on the information above.

1. True or False: Green beans are the most common garden vegetable.
  - a. true
  - b. false
2. How many days does it take for the pods to sprout?
  - a. fifty-five
  - b. sixty-five



### TOMATO MEASUREMENTS

Measure this bunch of tomatoes to the nearest 1/4 inch.

Tomatoes are the most popular garden produce in America. Tomatoes are easily grown in Illinois gardens. They come in many varieties, shapes, sizes, and colors. Tomatoes have stalky stems that connect them to clusters on vines.

### TOMATOES