

ELF *on the* SHELF



with



HOW TO USE THIS RESOURCE



Hi! I'm Sprout!

Looking for agriculture-themed Elf on the Shelf ideas?

Look no further!

Each page contains ideas for one Elf scene, including:

- ❄️ [A list of suggested materials](#)
- ❄️ [Tips and tricks for setup](#)
- ❄️ [Suggested Note from Sprout](#)
- ❄️ [Ag facts to share](#)
- ❄️ [Activities to pair, book recommendations, & more!](#)

note: anything underlined is linked in the PDF



APPLESAUCE ADVENTURE



MATERIALS:

Empty applesauce container
Apples

SETUP:

Lay the empty applesauce container on its side with the lid open. Prop the Elf up near it with some apples.

suggested NOTE FROM SPROUT

I licked this applesauce container clean but I'm still hungry! I guess it's my lucky day, because look what I just found...

APPLESAUCE ADVENTURE

Additional Resources

AG FACT:

On average, there are 240 million bushels of apples grown in the U.S. each year. That's about 30 billion apples!



BOOK RECOMMENDATIONS:

Applesauce Day by Lisa Amstutz

Apples to Oregon by Deborah Hopkinson

From Seed to Apple by Anita Ganeri



ACTIVITIES TO PAIR & OTHER RESOURCES

IAITC Apple Lessons: Apple Chain (K-3rd grade)
Apple Blossom Tree (K-3rd grade)

IAITC Apple Ag Mag (4th-8th grade), Junior Ag Mag (2nd-4th grade), Reader (6th-12th grade)
and Facts for Little Readers (K-1st grade)

AG FACT:

It takes 36 apples to create one gallon of apple cider.

TRACTOR BREAKDOWN



MATERIALS:

Toy Tractor
Blocks to build a "jack"
Tools

SETUP:

Prop the toy tractor up on blocks high enough that the elf can slide under it to make a repair. Scatter tools around the elf's work station.

suggested NOTE FROM SPROUT

I tried to fire up the tractor to do some carpet farming this morning and it wouldn't start! I sure hope I can get it fixed!

TRACTOR BREAKDOWN

Additional Resources

AG FACT:

Before tractors, farmers used cattle and horses to pull farm tools like plows!



BOOK RECOMMENDATIONS:

John Deere, That's Who!
by Tracy Nelson Maurer

Fantastic Farm Machines
by Cris Peterson



ACTIVITIES TO PAIR & OTHER RESOURCES

NAITC Machines in Agriculture Lesson
(3rd-5th grade)

mAGic Machine Logic Puzzle Lesson
(4th-8th grade)

John Deere Kids Educational Resources
(PK-6th grade)

AG FACT:

The first tractor was invented in 1892.

POPCORN PREDICAMENT



MATERIALS:

Microwave popcorn
Microwave

SETUP:

Pop 2-3 bags of popcorn. Leave one open on its side inside the microwave, then dump the other bag(s) around it as if the popcorn overflowed. Leave the microwave open with the Elf sitting inside.

suggested NOTE FROM SPROUT

We don't have popcorn at the North Pole, but I heard 14 billion quarts of it are eaten each year in America. I just had to try some, but things got a little out of hand!

POPCORN PREDICAMENT

Additional Resources

AG FACT:

The world's largest popcorn ball weighed 9,370 lbs and was 12 feet in diameter.



BOOK RECOMMENDATIONS:

Popcorn Country
by Cris Petersen

Let's Pop, Pop, Popcorn!
by Cynthia Schumerth



ACTIVITIES TO PAIR & OTHER RESOURCES

IAITC Popcorn Science Lesson (4th-6th grade)

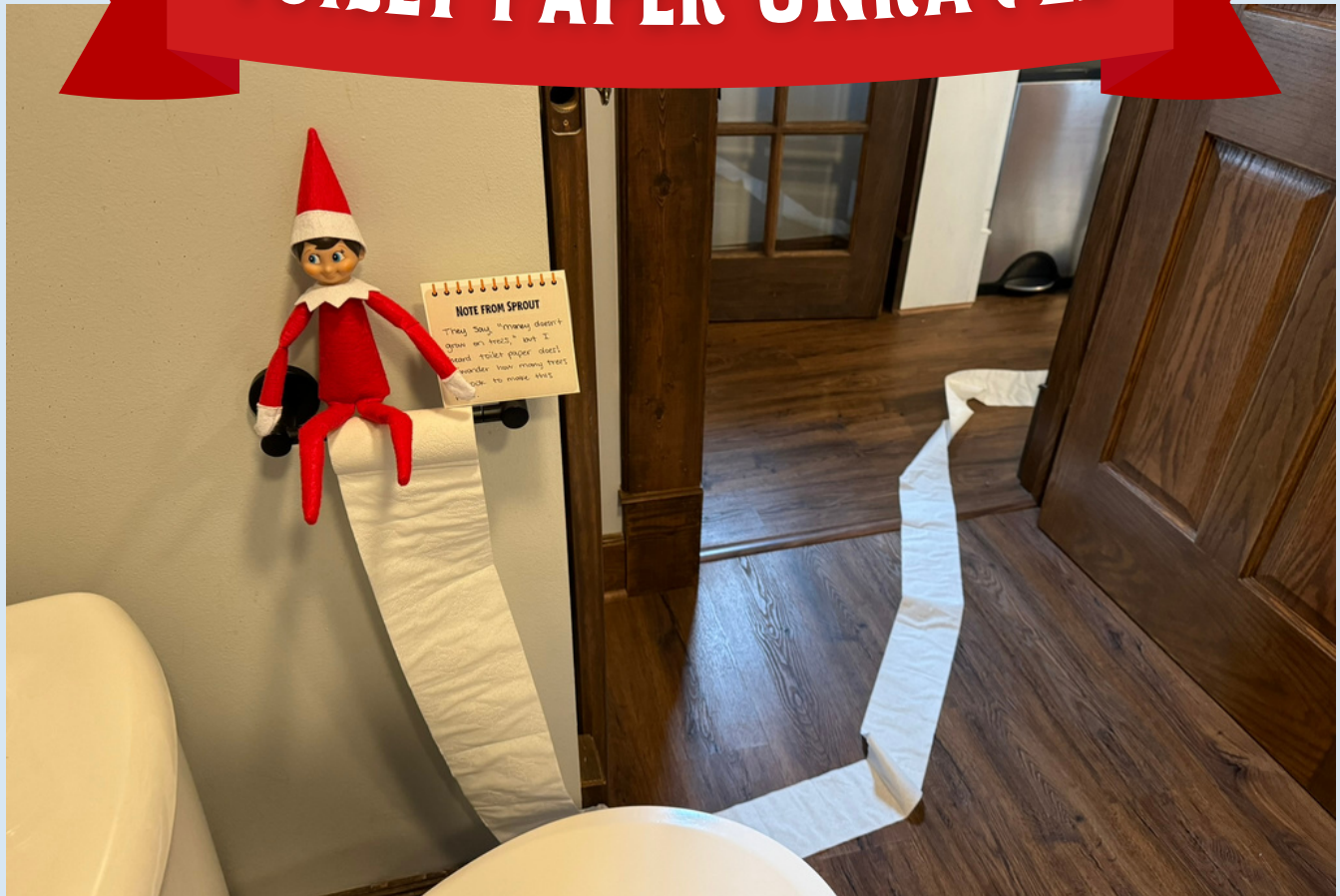
IAITC Popcorn Reader (6th-12th grade) and
Facts for Little Readers (K-1st grade)

Visit popcorn.org for more information, recipes,
and children's activities!

AG FACT:

Popcorn kernels pop up to 40x their original size!

TOILET PAPER UNRAVEL



MATERIALS:

Roll of toilet paper

SETUP:

Unravel the toilet paper (still on the holder) and leave it trailing outside the bathroom door and through the hallways - however much you'd like. Sit the Elf on top of the empty toilet paper roll.

suggested NOTE FROM SPROUT

They say, "money doesn't grow on trees," but I heard toilet paper does! I wonder how many trees it took to make this roll...

TOILET PAPER UNRAVEL

Additional Resources

AG FACT:

Toilet paper is made with "wood pulp" from 30% softwood trees & 70% hardwood trees.



BOOK RECOMMENDATIONS:

My Grandpa, My Tree, and Me
by Roxanne Troup

Because of an Acorn
by Lola and Sam Schaefer



ACTIVITIES TO PAIR & OTHER RESOURCES

IAITC Comparing Conifer Hardiness Lesson
(4th-6th grade)

IAITC Tree Ag Mag (4th-8th grade) -
only available online

How Toilet Paper is Made Video

AG FACT:

A single tree can produce up to 1,500 rolls of toilet paper!

CORN STARCH SNOW ANGELS



MATERIALS:

Corn Starch

SETUP:

Spread a thin layer of corn starch on a countertop and use your fingers to make an Elf-sized snow angel (you *can* use the actual Elf to make the snow angel... but be prepared for a mess if you do!). Lay the Elf in the snow angel.

suggested NOTE FROM SPROUT

I couldn't bring any snow inside without it melting, so instead I made a snow angel in this cool product made from field corn!

CORN STARCH SNOW ANGELS

Additional Resources

AG FACT:

Field corn is processed to make over 4,000 products you enjoy every day!



BOOK RECOMMENDATIONS:

Slime King by Catherine Daly

Corn by Gail Gibbons

Anna's Corn by Barbara Santucci



ACTIVITIES TO PAIR & OTHER RESOURCES

IAITC Oobleck Lesson (4th-8th grade)
mAGic Tassel to Table Lesson (4th-8th grade)

IAITC Corn Ag Mag (4th-8th grade),
Reader (6th-12th grade), and
Facts for Little Readers (K-1st grade)

AG FACT:

One bushel of field corn makes 31.5 pounds of corn starch!

ELF BATH TIME



MATERIALS:

Bathtub or sink
Soap

SETUP:

Sit the Elf of the edge of the bathtub or sink with the soap.

suggested NOTE FROM SPROUT

I needed a warm bath after rolling in corn starch, but my water keeps getting cold. It's okay for me to just leave the water running, right?

ELF BATH TIME

Additional Resources

AG FACT:

Letting your faucet run for five minutes can waste up to ten gallons of water. Always turn the water off when you're not using it!



BOOK RECOMMENDATIONS:

The Great Big Water Cycle Adventure
by Kay Barnham

Water is Water by Miranda Paul

The Water Lady by Alice McGinty



ACTIVITIES TO PAIR & OTHER RESOURCES

IAITC Water Lessons:

Water Cycle In-a-Bag (1st-5th grade)

Grow a Snowflake (4th-6th grade)

IAITC Water Ag Mag (4th-8th grade) and
Reader (6th-12th grade)

AG FACT:

Water covers 71% of the earth, but only 2.5% of that is drinkable.

BAKING PUMPKIN PIE



MATERIALS:

- Libby's canned pumpkin
- Pie pan
- Pie crust
- Other baking supplies as desired

SETUP:

Arrange the Elf and the pie supplies as listed above on the countertop / stovetop.

suggested NOTE FROM SPROUT

Did you know that Illinois is first in the country in pumpkin production? One delicious pie made with canned pumpkin from Morton, Illinois, coming right up!

BAKING PUMPKIN PIE

Additional Resources

AG FACT:

Illinois grows 90-95% of the pumpkins used for processing in the United States.



BOOK RECOMMENDATIONS:

Pick a Pumpkin by Patricia Toht

Pumpkin Pie for Sigd: A Holiday Tale
by Jennifer Tzivia Macload

The Pie that Molly Grew
by Sue Heavenrich



ACTIVITIES TO PAIR & OTHER RESOURCES

IAITC Pumpkin Lessons: 3D Pumpkin (3rd-5th grade), Pumpkin Pie in a Bag (K-3rd grade)

IAITC Pumpkin Ag Mag (4th-8th grade), Junior Ag Mag (2nd-4th grade), Reader (6th-12th grade), and Facts for Little Readers (K-1st grade)

AG FACT:

Processing pumpkins are not the same as carving pumpkins!

(RED &) GREEN THUMB



MATERIALS:

- Tray/shallow box with potting soil
- Mini garden tools (or actual size)
- Garden seed packets

SETUP:

Set up the garden box with the Elf knelt in front of it, holding garden tools if possible. Set seed packets off to the side.

suggested NOTE FROM SPROUT

I'm hungry for some garden-fresh vegetables, so I thought I would just grow some myself!

(RED &) GREEN THUMB

Additional Resources

AG FACT:

One teaspoon of healthy soil contains more organisms than there are people on earth!



BOOK RECOMMENDATIONS:

Up in the Garden and Down in the Dirt
by Kate Messner

We Are the Gardeners by Joanna Gaines

A Seed is Sleepy by Dianna Hutts Aston



ACTIVITIES TO PAIR & OTHER RESOURCES

IAITC Gardening & Specialty Crop Lessons:

Garden in a Glove (K-5th grade)

Plant Parts Logic Puzzle (3rd-8th grade)

IAITC Soil Your Undies Lesson (K-12th grade)

IAITC Farm Bites One-Page Resources

AG FACT:

55% of U.S. households have a garden of some kind.

CHRISTMAS TREE CLIMB



MATERIALS:

Christmas Tree

SETUP:

Arrange the Elf in your Christmas Tree as if it is climbing up the branches.

suggested NOTE FROM SPROUT

Don't mind me, just practicing my climbing! Hey, how old do you think this tree is? Older than you?

CHRISTMAS TREE CLIMB

Additional Resources

AG FACT:

Christmas trees are grown on more than 300,000 acres of land across the country.



BOOK RECOMMENDATIONS:

Pick a Pine Tree
by Patricia Toht

Zee Grows a Tree
by Elizabeth Rusch



ACTIVITIES TO PAIR & OTHER RESOURCES

IAITC 3D Evergreen Tree Lesson (3rd-5th grade)

IAITC Christmas Tree Resources Blog Post

IAITC Christmas Trees Farm Bites

IAITC Virtual Field Trip with Helmig's Tree Farm

AG FACT:

Christmas trees take up to 15 years to grow 6 feet tall!

HOLLY JOLLY JOY RIDE



MATERIALS:

Elf-sized toy car (Barbie cars work well)
Corn & soybeans (if you have access)

SETUP:

Sit the Elf in the driver's seat of the car. Scatter corn and soybeans around the car.

suggested NOTE FROM SPROUT

Just driving around in my car filled with corn and soybean products! Do you think the police will accept my North Pole driver's license?

HOLLY JOLLY JOY RIDE

Additional Resources

AG FACT:

Corn and soybeans are used to make biofuels - a sustainable fuel source!



BOOK RECOMMENDATIONS:

Full of Beans by Peggy Thomas

The Inventor's Secret: What Thomas Edison Told Henry Ford
by Suzanne Slade



ACTIVITIES TO PAIR & OTHER RESOURCES

IAITC Soybean Plastic Lesson (3rd-7th grade)

Sitting on Soybeans TED Talk

IAITC Renewable Energy Ag Mag (4th-8th grade), Reader (6th-12th grade), and Facts for Little Readers (K-1st grade)

AG FACT:

Every Ford vehicle contains 31,251 soybeans in foam in the seats!

SODA BREAK



MATERIALS:

Mini can of soda (or actual size)
Toy fridge (optional)

SETUP:

Sit the Elf on the counter or in a chair - next to the fridge, if you have one - with a can of soda in its hand or on the table nearby.

suggested NOTE FROM SPROUT

I got thirsty and found this soda in the fridge. It must be healthy for me, because the second ingredient is corn!

SODA BREAK

Additional Resources

AG FACT:

99% of the corn grown in the U.S. is processed into feed, food, and fuel products!



BOOK RECOMMENDATIONS:

Corn Belt Harvest by Raymond Bial

How Did That Get in My Lunchbox?
by Chris Butterworth



ACTIVITIES TO PAIR & OTHER RESOURCES

IAITC Grain Crops "Zine" (2nd-5th grade)

How Corn Syrup is Made Video

IAITC Corn Ag Mag (4th-8th grade),
Reader (6th-12th grade), and
Facts for Little Readers (K-1st grade)

AG FACT:

High Fructose
Corn Syrup used
in soda is 55%
fructose.

FOLLOW THE YARN



MATERIALS:

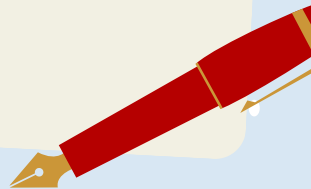
- Yarn
- Toy sheep
- Cotton *balls* (if you have access)
- OR cotton balls from the store

SETUP:

Set the end of the yarn and the Note from Sprout in or outside one room of the house or school, then leave a yarn trail to another room where you've left the rest of the ball of yarn, the Elf, and a toy sheep and cotton boll.

suggested NOTE FROM SPROUT

Inside this ball of yarn was a clue for what yarn is made of. Follow the trail to find me and see for yourself!



FOLLOW THE YARN

Additional Resources

AG FACT:

The fastest sheep shearer in the world sheared a sheep in 39.31 seconds in 2010.



BOOK RECOMMENDATIONS:

If You Want to Knit Some Mittens
by Laura Purdie Salas

Levi Strauss and Blue Jeans
by Nathan Olsen (Graphic Novel)



ACTIVITIES TO PAIR & OTHER RESOURCES

IAITC Sweater Weather Weaving Lesson
(3rd-6th grade)

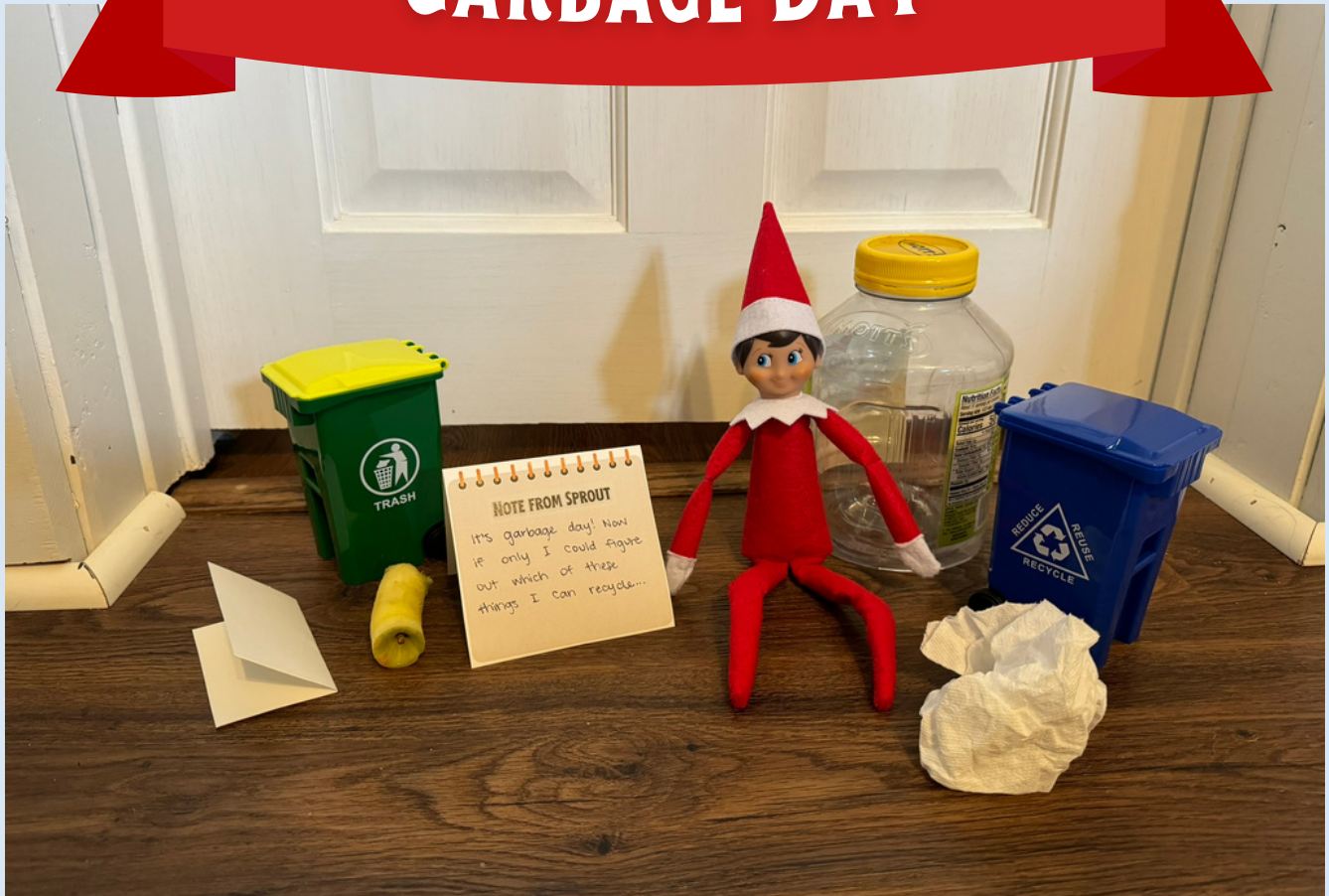
IAITC Cotton Reader (6th-12th grade)

IAITC Sheep Reader (6th-12th grade) and
Facts for Little Readers (K-1st grade)

AG FACT:

Over 50% of spun yarn is made from cotton.

GARBAGE DAY



MATERIALS:

Mini garbage can (or make your own)

Mini recycle bin (or make your own)

Assorted garbage (some recyclable)

SETUP:

Arrange the Elf and the trash on the table along with the garbage cans.

suggested NOTE FROM SPROUT

It's garbage day! Now if only I could figure out which of these things I can recycle...

GARBAGE DAY

Additional Resources

AG FACT:

Almost half of the food in America goes to waste – this food can instead be composted for soil.



BOOK RECOMMENDATIONS:

The Mess That We Made by Michelle Lord

Reuse this Book! from Clarion Books

Michael Recycle by Ellie Bethel



ACTIVITIES TO PAIR & OTHER RESOURCES

IAITC Circle of Earth Bracelet Lesson
(K-4th grade)

IAITC Classroom Vermicomposting Lesson
(K-8th grade)

IAITC Sustainability Ag Mag (4th-8th grade) and
Earth Day Facts for Little Readers (K-1st grade)

AG FACT:

Americans throw away 2.5 million plastic bottles every hour.

FARMERS MARKET



MATERIALS:

Farmers market stand (can make your own or use a small shelf/table)
Assorted fruits and vegetables

SETUP:

Arrange the Elf and the farmers market materials so it looks like the Elf is selling their produce at the market.

suggested NOTE FROM SPROUT

Pile it high and watch it fly!
Remember those vegetables
I planted? Now YOU can
enjoy the fruits of my labor!

FARMERS MARKET

Additional Resources

AG FACT:

Illinois ranks 3rd in the country in number of farmers markets with more than 300 markets!



BOOK RECOMMENDATIONS:

On the Farm, At the Market
by G. Brian Karas

Farmer Will Allen and the Growing Table
by Jacqueline Briggs Martin



ACTIVITIES TO PAIR & OTHER RESOURCES

IAITC Farmers Market Lessons:

Design a Farmers Market Booth (K-5th grade)
Farmers Market Scavenger Hunt (2nd-5th grade)

IAITC Farmers Market Ag Mag (4th-8th grade)
and Facts for Little Readers (K-1st grade)

AG FACT:

Farmers Markets generate \$2.4 billion for the U.S. economy.

COLLECTING EGGS



MATERIALS:

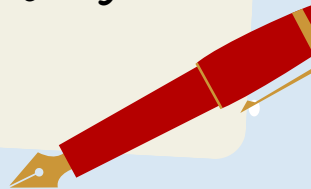
- Eggs
- Basket or egg carton
- Toy chicken (optional)

SETUP:

Set up the Elf as if it has just come inside from collecting chicken eggs, propped up next to a basket of fresh eggs with a toy chicken nearby.

suggested NOTE FROM SPROUT

It's a good thing chickens lay about 300 eggs a year, because I could eat omelets for breakfast every day!



COLLECTING EGGS

Additional Resources

AG FACT:

The average American eats 91 pounds of chicken and about 250 eggs per year.



BOOK RECOMMENDATIONS:

Sonya's Chickens by Pheobe Wahl

The Chicken-Chasing Queen of Lamar County
by Janice Harrington

ACTIVITIES TO PAIR & OTHER RESOURCES

IAITC Egg-cellent Embryology Lesson
(3rd-6th grade)

mAGic Egg Anatomy Lesson

IAITC Poultry Ag Mag (4th-8th grade), Reader
(6th-12th grade) and Facts for Little Readers
(K-1st grade)

AG FACT:

You can tell what color eggs a hen will lay by the color of her earlobes.



SIZZLIN' SPROUT



MATERIALS:

Bacon
Frying pan
Spatula

SETUP:

Lay the package of bacon and the frying pan on the stove top or countertop with the Elf sitting next to it holding a spatula.

suggested NOTE FROM SPROUT

You know what else my omelet needs? Bacon.
Bacon is always the answer.

SIZZLIN' SPROUT

Additional Resources

AG FACT:

Illinois pig farmers produce 2.1 billion pounds of pork each year. That's more than 6 billion pork chops!



BOOK RECOMMENDATIONS:

Pigology: The Ultimate Encyclopedia
by Daisy Bird

The Pig War: How a Porcine Tragedy
Taught England and America to Share
by Emma Bland Smith



ACTIVITIES TO PAIR & OTHER RESOURCES

IAITC Pork Lessons:

Paper Bag Pig Puppet (K-2nd grade)
Farm Animal Flip Book (2th-5th grade)

IAITC Pork Ag Mag (4th-8th grade),
Reader (6th-12th grade), and
Facts for Little Readers (K-1st grade)

AG FACT:

Pork accounts for 40% of all meat consumed worldwide.

BEE MERRY



MATERIALS:

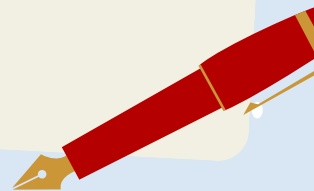
- Small cardboard box
- Honey
- Honey stirrer (optional)

SETUP:

Decorate the outside of the box with honeycomb shapes and bees. Sit the Elf beside the box with the honey and a honey stirrer, if you have one.

suggested NOTE FROM SPROUT

The honey I just harvested from this beehive is so delicious, it's un-bee-lievable!



BEE MERRY

Additional Resources

AG FACT:

Pollinators, like bees, play a critical role in food production by allowing plants to produce fruits and vegetables.



BOOK RECOMMENDATIONS:

Honeybee: The Busy Life of Apis Mellifera
by Candace Fleming

Give Bees a Chance by Bethany Barton

Flower Talk by Sara Levine



ACTIVITIES TO PAIR & OTHER RESOURCES

IAITC Pollinator Lessons: Build a Bee Hotel
(2nd-5th grade)

The Bees Knees and More (3rd-6th grade)
Powder-Powered Pollination (K-3rd grade)

IAITC Pollinator Ag Mag (4th-8th grade), Reader
(6th-12th grade) and Facts for Little Readers
(K-1st grade)

AG FACT:

One out of every
3 bites of food
you eat exists
because of
pollinators.

MORE S'MORES, PLEASE!



MATERIALS:

Mini campfire OR a few small sticks
Lawn chair (optional)
S'more supplies (*Elf-sized OR actual size*)

SETUP:

Set the Elf up around the campfire with a marshmallow on a stick, with other s'more supplies nearby.

suggested **NOTE FROM SPROUT**

Just making my favorite
roasty-toasty campfire
treat! I wonder what
marshmallows are even
made of...

MORE S'MORES, PLEASE!

Additional Resources

AG FACT:

S'mores are made with 3 plant-based ingredients: marshmallows (sugar), chocolate (cacao), and graham crackers (wheat)!



BOOK RECOMMENDATIONS:

From Wheat to Bread by Bridget Heos

From Cocoa Beans to Chocolate
by Bridget Heos

Hero for the Hungry by Peggy Thomas



ACTIVITIES TO PAIR & OTHER RESOURCES

IAITC Wheat Milling Lesson (K-4th grade)

IAITC Recipes

Homemade Graham Crackers Recipe

How Marshmallows Are Made Video

AG FACT:

One bushel of wheat can make about 20 boxes of graham crackers!

A VERY DAIRY CHRISTMAS



MATERIALS:

Toy dairy cow
Mini milk bucket
Milk (Elf-sized or actual size)

OPTIONAL: Milk truck

SETUP:

Stand or sit the Elf next to the dairy cow with the milk bucket, with the milk and the optional milk truck nearby.

suggested NOTE FROM SPROUT

Milking a cow sure is tiring...
thank goodness for new
milking technology that lets
me have dairy products
without the sore hands!

A VERY DAIRY CHRISTMAS

Additional Resources

AG FACT:

Each year, U.S. dairy farmers provide milk to make more than 1 billion gallons of ice cream and 7 billion pounds of cheese!



BOOK RECOMMENDATIONS:

Tales of the Dairy Godmother: Chuck's Ice Cream Wish by Viola Butler

Clarabelle: Making Milk and So Much More by Cris Peterson

It's Milking Time by Phyllis Alsdurf



ACTIVITIES TO PAIR & OTHER RESOURCES

IAITC Dairy Lessons: Moo Mask (K-2nd grade)
Beautiful Bovine (2nd-4th grade)

www.whereismymilkfrom.com

IAITC Dairy Ag Mag (4th-8th grade), Reader (6th-12th grade) and Facts for Little Readers (K-1st grade)

AG FACT:

The average American consumes almost 25 gallons of milk a year!

GAME NIGHT



MATERIALS:

Board games
Card games

SETUP:

Arrange the games on the table or floor around the Elf sitting in the middle.

suggested NOTE FROM SPROUT

I've had so much fun with you this holiday season and I can't wait to see you again next year! Until then... want to play a game?

GAME NIGHT

Additional Resources

AG FACT:

Illinois' top five agricultural commodities are: corn, soybeans, hogs, cattle, and pumpkins.



WINTER/HOLIDAY BOOKS:

Mr. Willowby's Christmas Tree
by Robert Barry

Christmas Farm by Mary Lyn Ray

Sleep Tight Farm by Eugenie Doyl



CHECK OUT OUR IAITC GAMES:

Spot IL!

Corn Soy Hogs Cattle Pumpkin

Water Cycle Jenga

Good Bugs, Bad Bugs Memory.

...and more!

AG FACT:

Need a snack while you play? Popcorn is Illinois' official state snack food.

THANK YOU *for* PLAYING WITH US!

Share your Sprout-inspired Elf shenanigans with us at:



@agintheclassroom



@ilaitc

Have yourself a
very happy holiday!

