



# PARTS OF A FLOWER

## Grade Level

K-6

## Length of Lesson

45 minutes

## Objective

By the end of this lesson, students will be able to identify the four main parts of a flower and describe the functions of each part.

## Materials

- Student Worksheets (1 for each student)
- Crayons or Colored Pencils
- Scissors
- Hole punch
- Brads (paper fasteners)

## Standards

### NGSS

K-LS1-1, 2-LS2-2,  
K-2-ETS1-2

## Lesson Summary

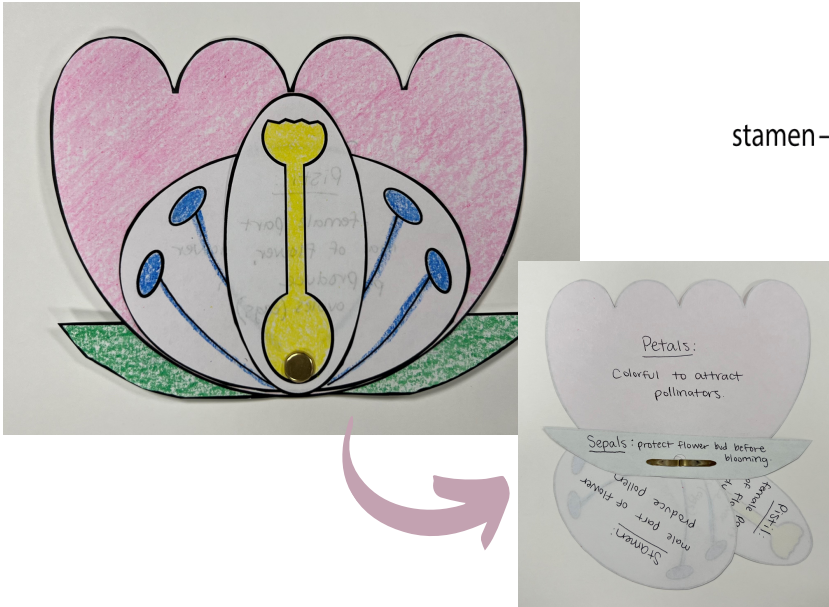
This lesson is designed to teach students about the four main parts of a flower and learn about the function of each part. Students will learn by creating and assembling a paper cross-section of a flower.

## Suggested Sequence of Events:

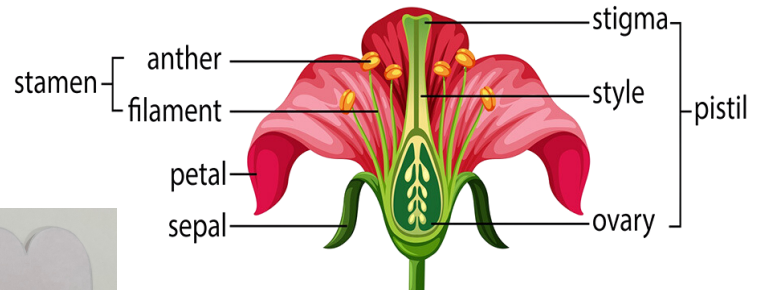
1. Set Up: There are two ways this activity can be set up.
  1. On white paper, print the Student Worksheet that contains all four parts on one page, one for each student. The students will color in the flower before they cut and assemble. *OR*
  2. Print copies of the parts of a flower pages that contain many of one part on a page, each on a different colored paper, cut them into squares, and give to students to cut and assemble.
2. Read *Oh Say Can You Seed* by Bonnie Worth to capture student interest.
3. Read through the [IAITC Pollinator Ag Mag](#) to learn more about flowers and pollinators! Interactive online versions can be found on our website.
4. Complete the activity following the procedures:
  - Provide students with a set of flower parts. Have them color in the flower using their choice of colors (if applicable... see Set Up above).
  - Ask students to cut out the four flower parts along the thick outer border.
  - Have students use a hole punch to create a hole where there is a dot on each part.
  - On the back side of each part, have students write the name of the flower part and describe the function.
    - Sepals: protect flower bud before blooming
    - Petals: colorful to attract pollinators
    - Pistil: female part of flower, produce ovules (eggs)
    - Stamen: male part of flower, produce pollen
  - Assemble the flowers (use picture on next page as an example) using the brad fasteners. Students will be able to rotate each part down to read the function on the back.
5. Whole class discussion and reflection of activity.

# TEACHER RESOURCES

## Flower Assembly



## Parts of a Flower Diagram



## Extension Ideas

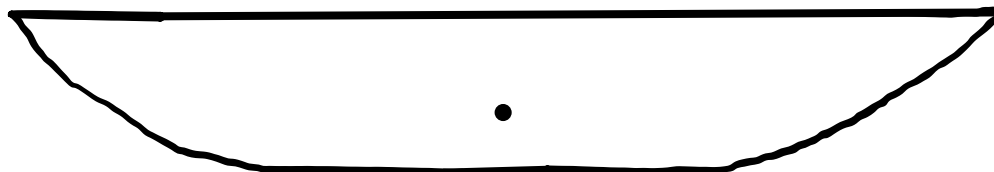
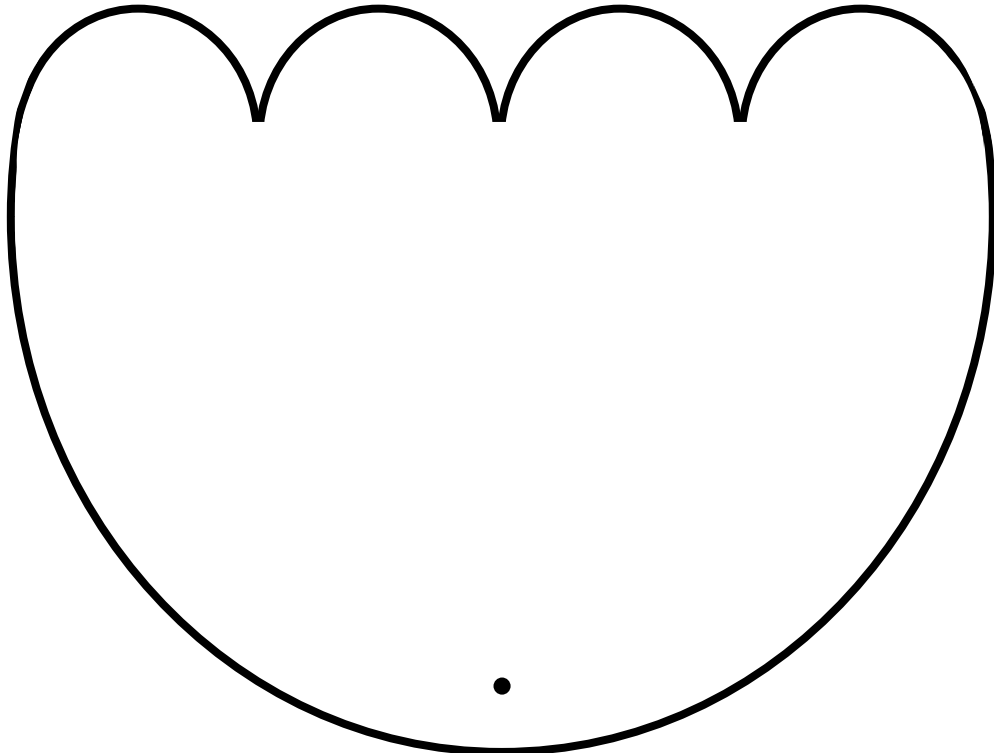
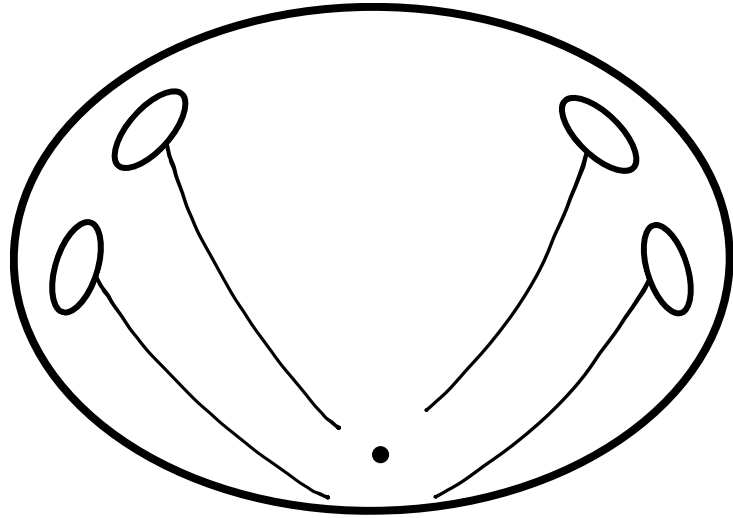
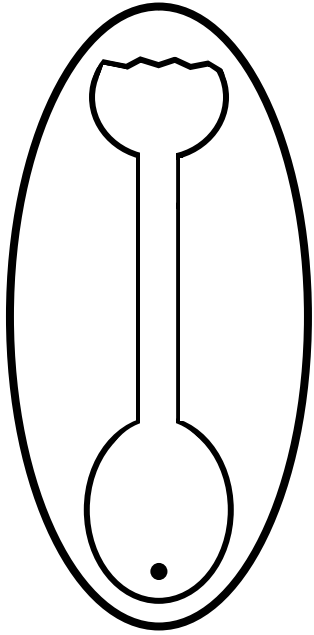
- Visit a local floral shop and ask for leftover flower stems. Allow students to "dissect" the flower and try to find each of these four parts.
- The Pistil and Stamen are each comprised of many different parts with specialized functions. Learn about each part and how it plays into the process of pollination.
- Print petals in different colors and talk with students about how different colored flowers attract different pollinators.
  - Read *Flower Talk* by Sara Levine or *Flowers are Calling* by Rita Gray to connect to this idea.
- Complete IAITC lesson [Powder-Powered Pollination](#) to learn about how each of these parts plays a role in pollination.
- Go to [agintheclassroom.org](http://agintheclassroom.org) to contact your County Ag Literacy Coordinator for free classroom sets of our Ag Mags!



Science

# PARTS OF A FLOWER

STUDENT WORKSHEET

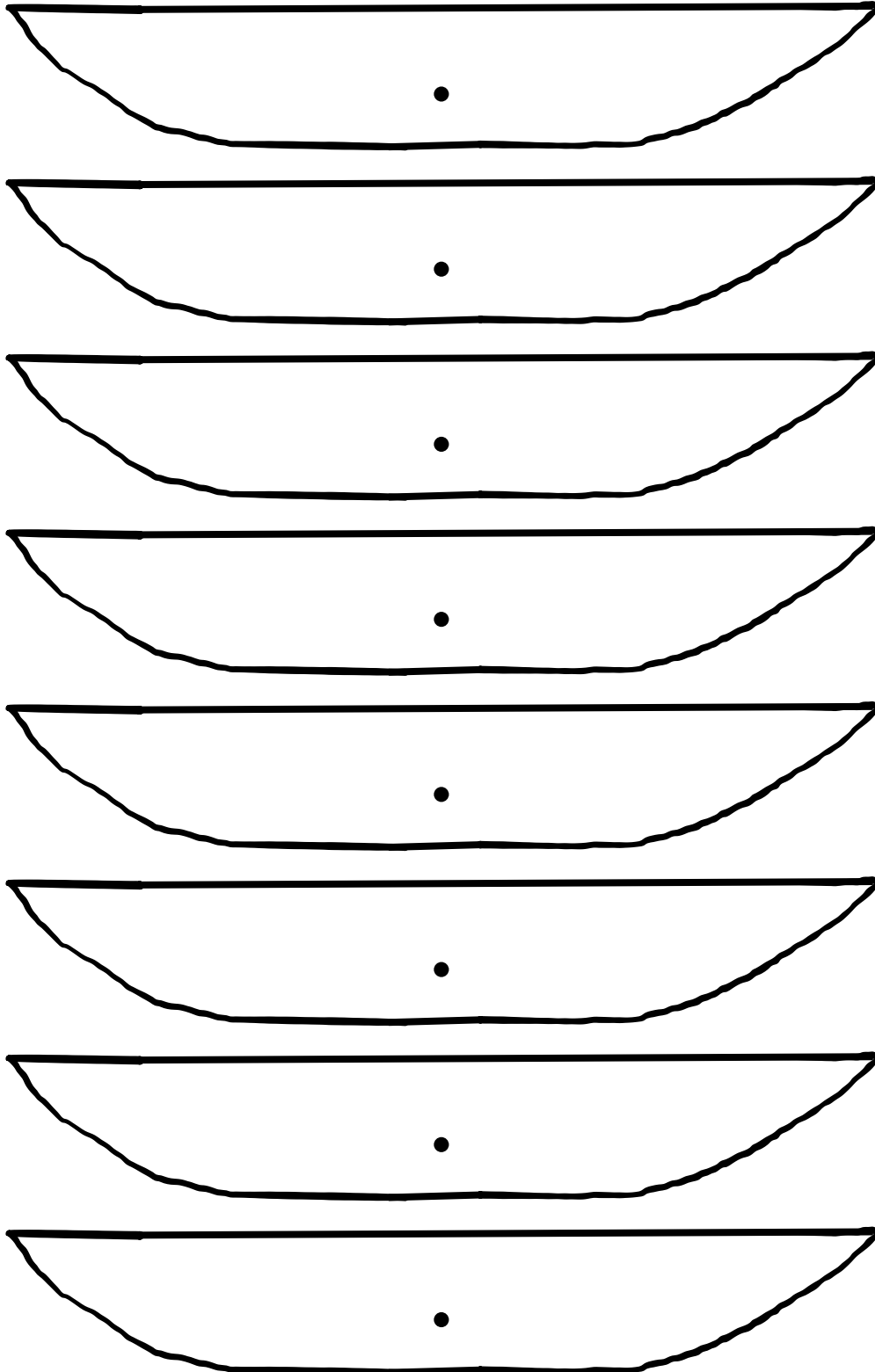




Science

# PARTS OF A FLOWER

## SEPALS

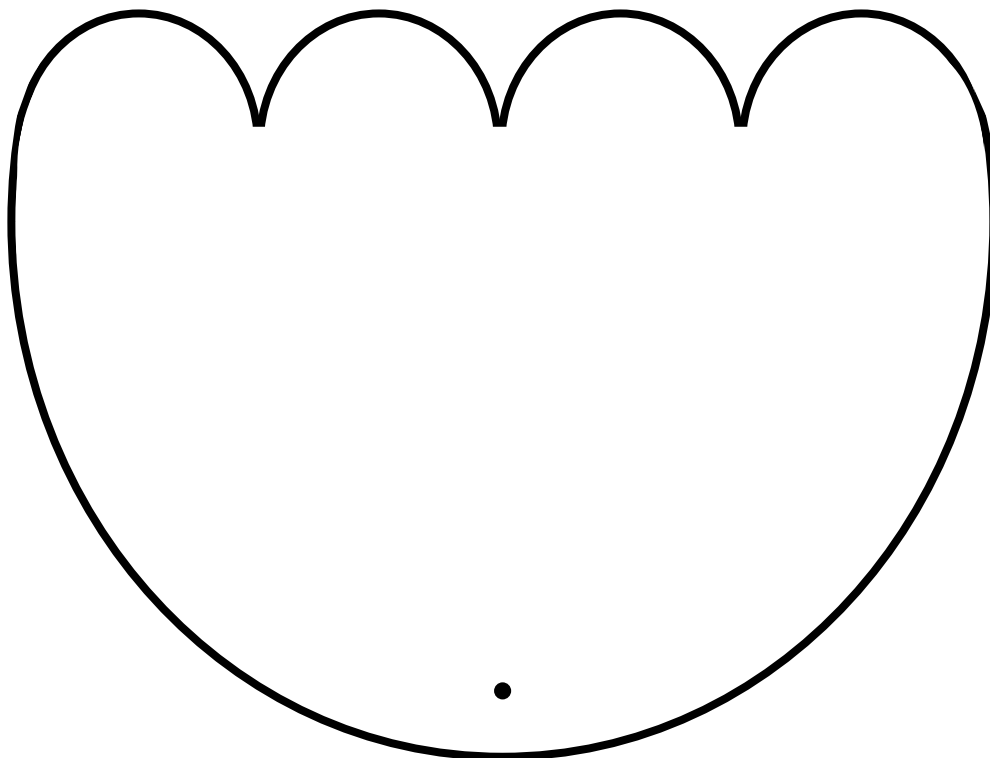
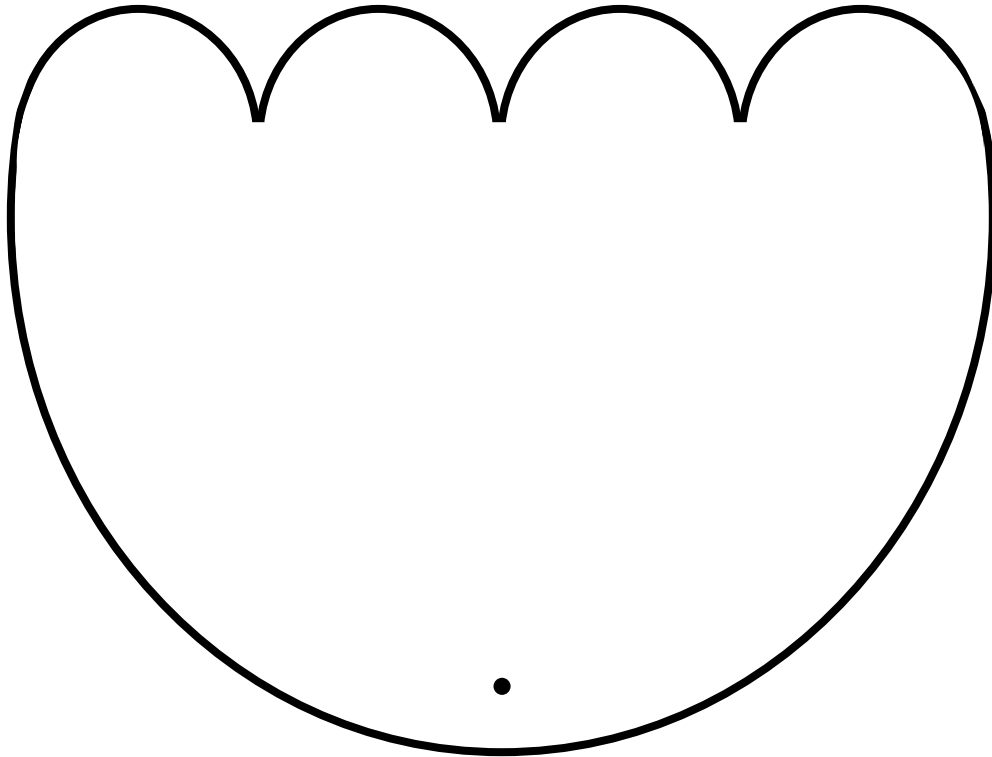




Science

# PARTS OF A FLOWER

PETALS

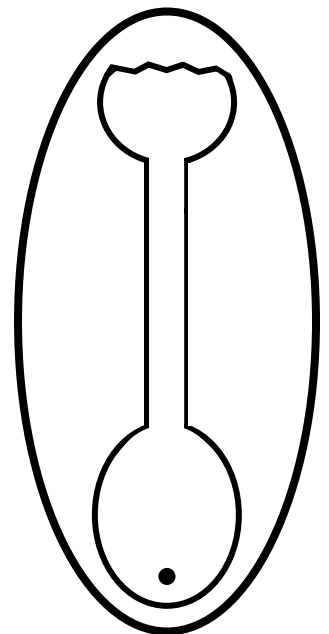
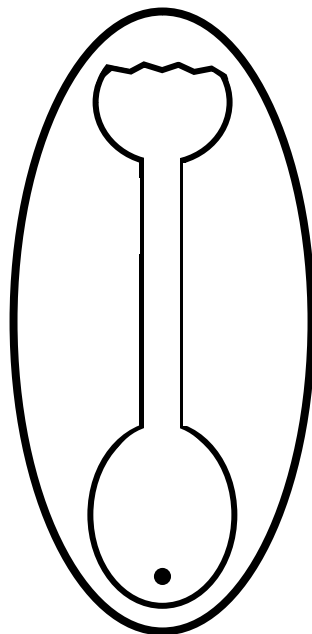
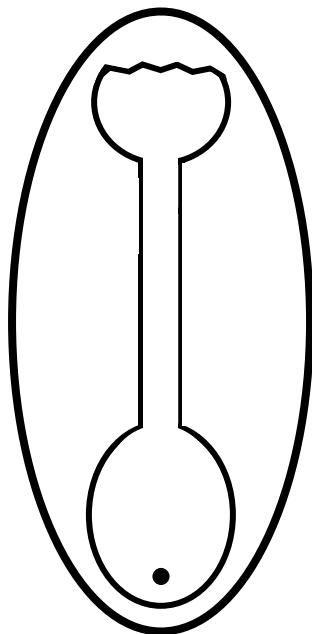
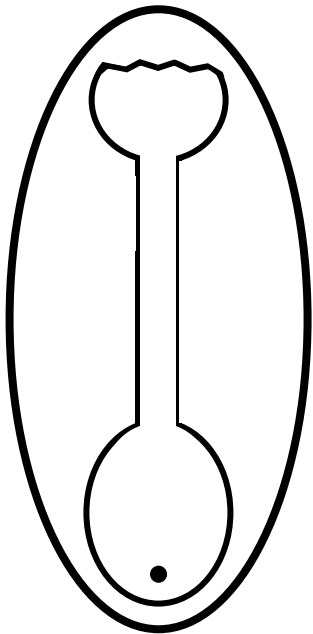
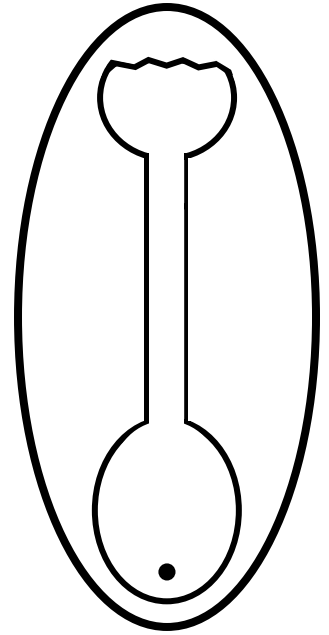
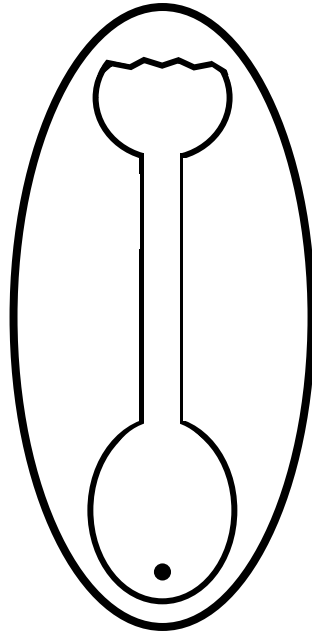
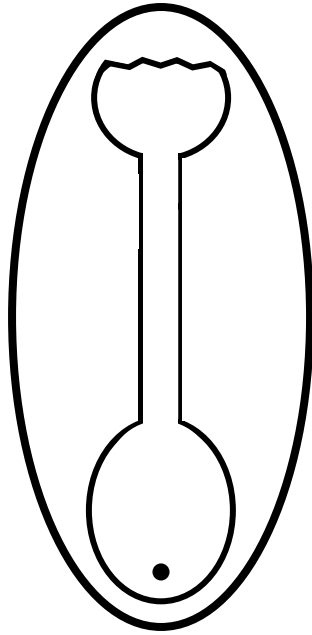
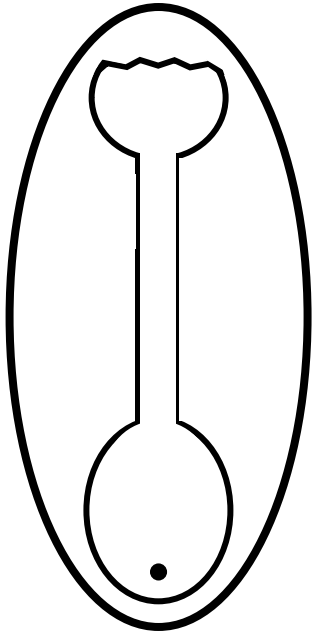




Science

# PARTS OF A FLOWER

## PISTILS





Science

# PARTS OF A FLOWER

## STAMENS

