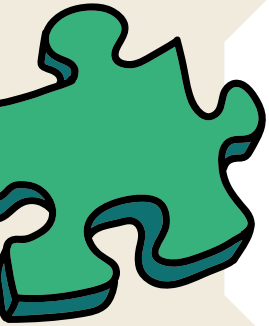




GROW A SOYBEAN PLANT

PHENOMENON:

Plants, like all living things, have basic needs that must be met in order to survive and thrive in their environments.



CHALLENGE:

Grow a soybean seed into a plant.

QUESTIONS TO CONSIDER:

- What does a seed need to germinate?
- What does a plant need to grow?
- Can a plant stay in the same size pot as it grows?
- What things might help the plant grow best?



BEHIND THE SCENES:

Soybeans are small, round seeds, each with a tiny hilum and made up of three basic parts. Each soybean has a seed coat, cotyledon, and the embryo. Soybean plants generally reach a height of 1 m (3.3 feet) and take 80-120 days from sowing to harvesting. Soybeans, like all plants, require a healthy environment and have specific needs to be able to grow into a full, healthy plant!

